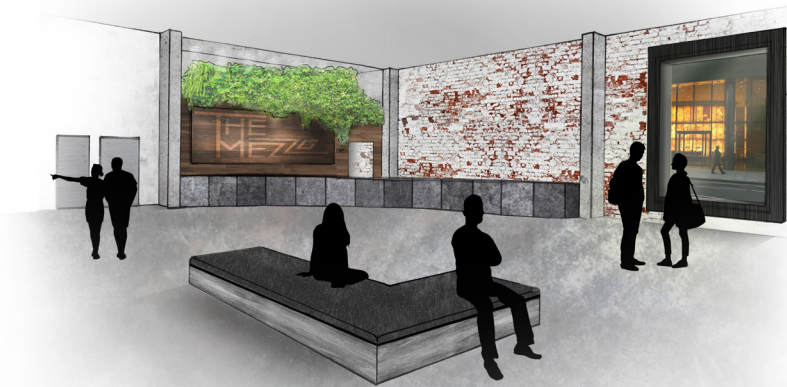


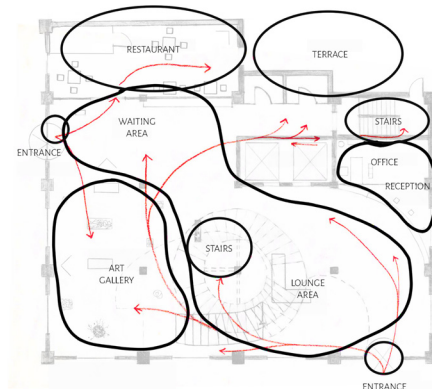
# HOTEL LOBBY DESIGN: THE MEZZO

## CONCEPT

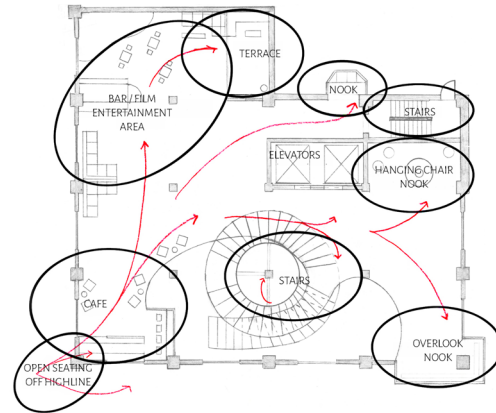
A TRANSITIONAL HOTEL LOCATED OFF  
OF THE HIGHLINE IN NEW YORK THAT  
COMBINES ELEMENTS FROM THE CHELSEA  
& MEATPACKING DISTRICT.



FIRST FLOOR



## SECOND FLOOR



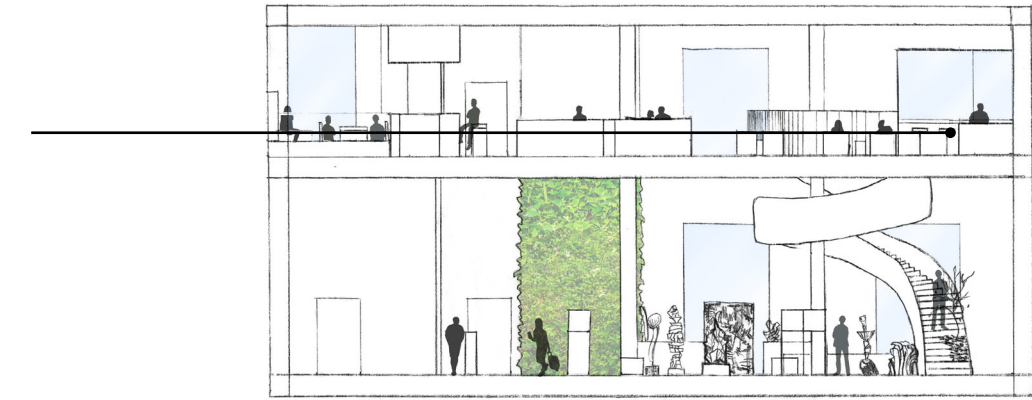
Urban, Upscale, Black + White, Stark, Pops of Organic elements, transitional,

“Biophilia” ← organic MODERN NARRATIVE → all same font or modern font for words inspired by Meatpacking District & curly Script font for Chelsea inspired words

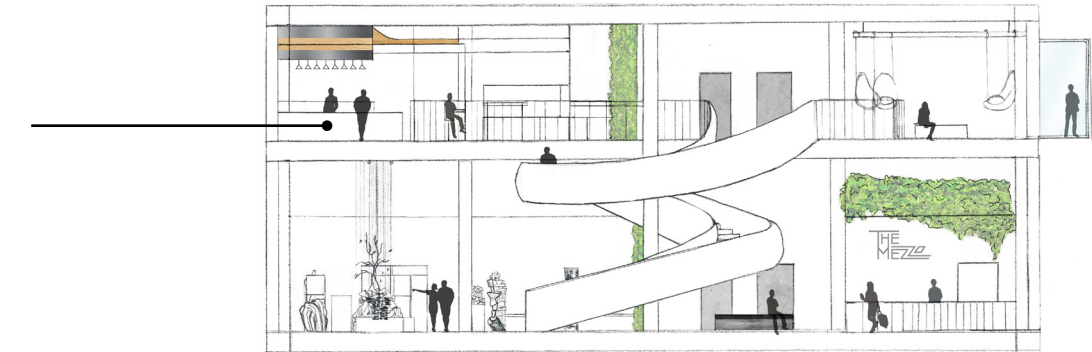
arts & culture transitional NIGHT LIFE

[illegible]

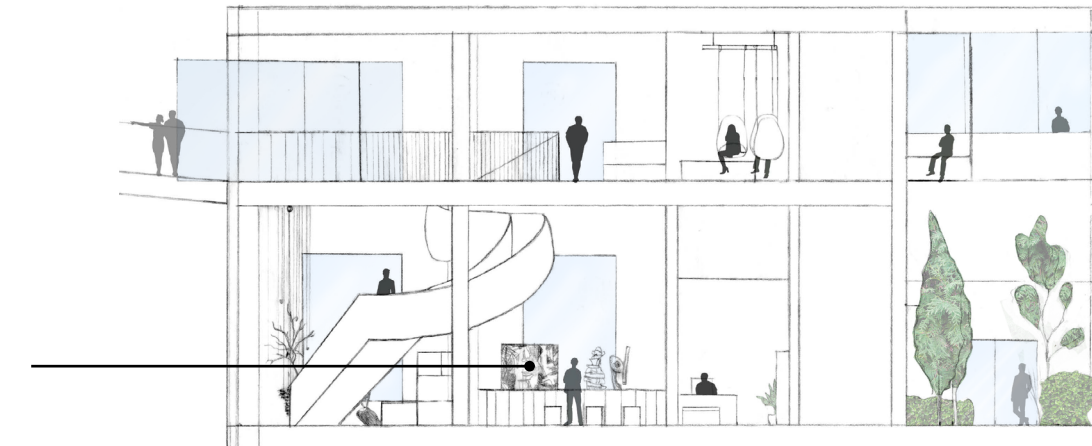
ELEVATION A:  
THE MELD CAFE



## ELEVATION B: THE MERGE BAR



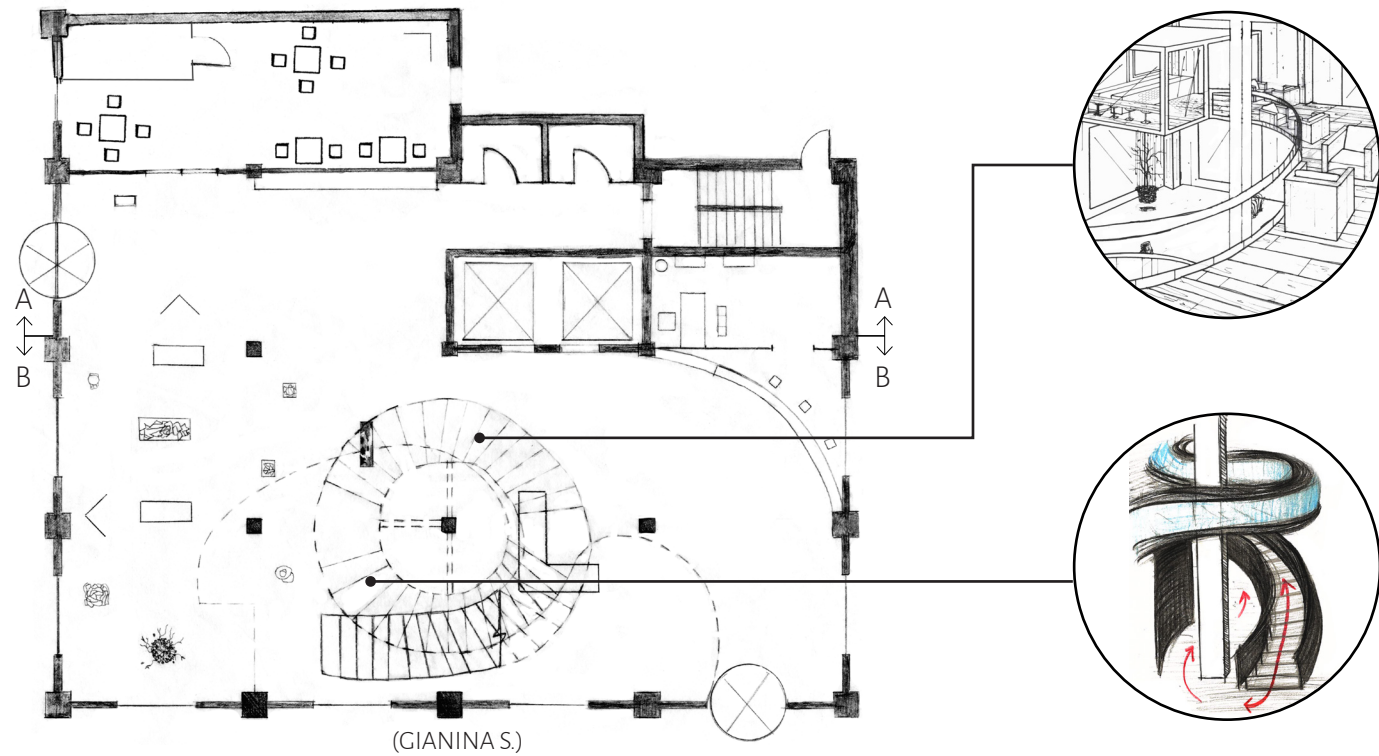
ELEVATION C:  
THE MARROW GALLERY



(ELEVATIONS DONE BY GIANINA S.)



FIRST FLOOR



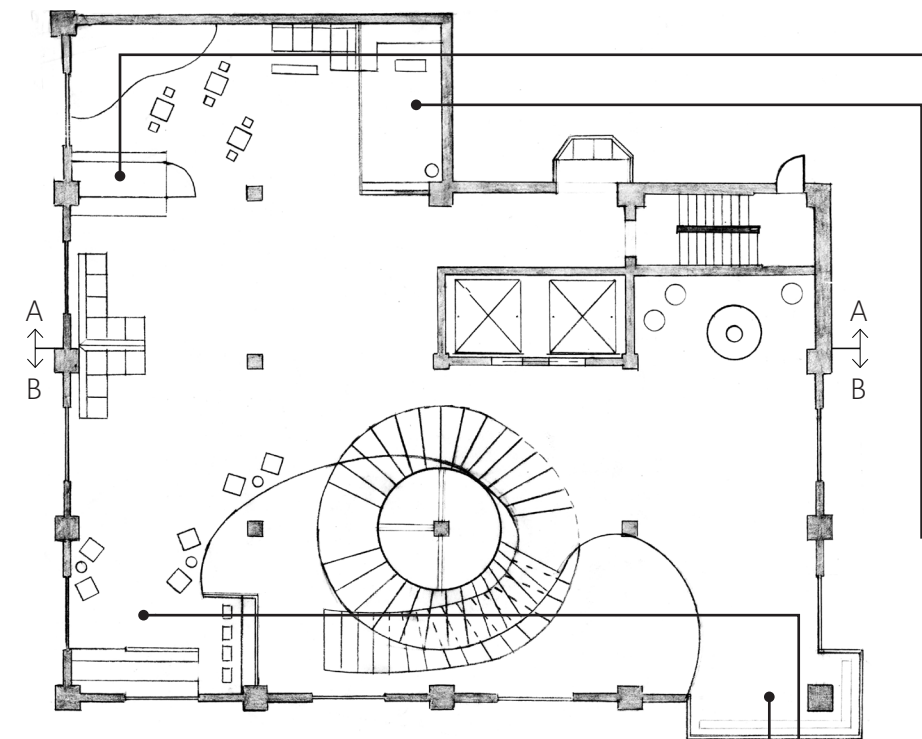
(GIANINA S.)

**Heavy**  
**Light**

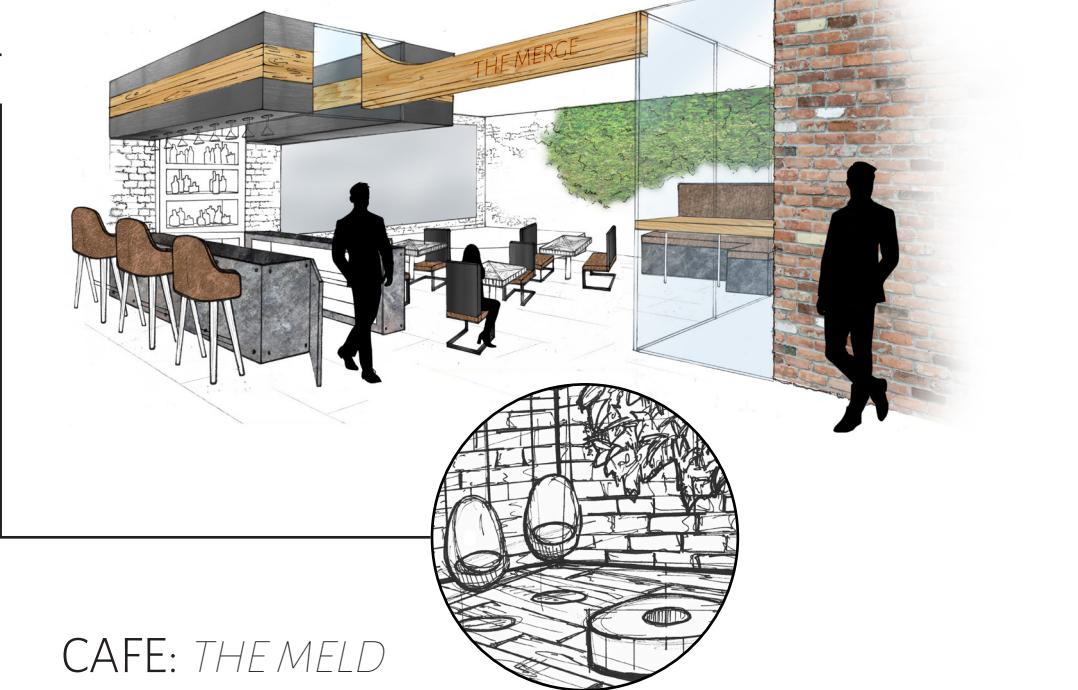
find balance between frames and curves  
↳ art influencing the curve

> maybe the restaurant menu changes as the art display changes (monthly?)  
Balcony: heavy  
open loft: light (airy)

SECOND FLOOR

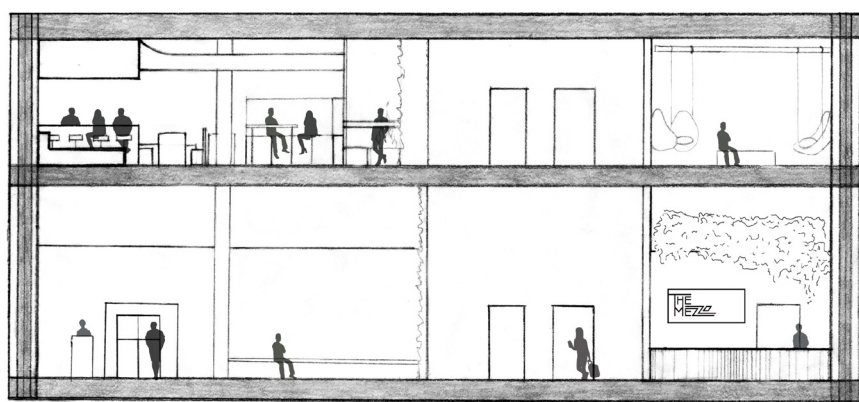


RESTAURANT: *THE MERGE*

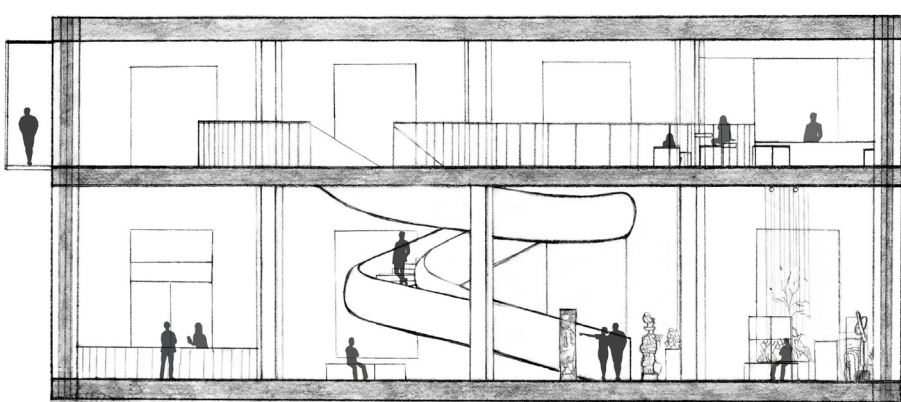


CAFE: *THE MELD*

SECTION A



SECTION B



(GIANINA S.)

